

**Green Bay**

2049 Creamery Road
De Pere, WI 54115
P: 800.242.2891
F: 920.336.9188

Milwaukee

2435 W. Southbranch Blvd
Oak Creek, WI 53154
P: 800.242.5244
F: 414.761.6265

Minneapolis

9600 71st Street NE
Albertville, MN 55301
P: 888.399.3845
F: 763.497.7086

Grand Rapids

6634 Center Industrial Dr.
Jenison, MI 49428
P: 888.878.2546
F: 616.534.7736

HEAVY DUTY PARTS LINE CARD**AIR TREATMENT**

Chicago Rawhide/SKF
FPPF Chemicals
Haldex
Meritor/Wabco
Precision Rebuilders

AXLES

ArvinMeritor
Dana Spicer
Dexter
Eaton
Hendrickson
IMT/Ingersoll
Ridewell

BEARINGS

Hyatt
NTN/Bower
SKF
Stemco
Timken
TSB

BEDLINERS

Aero
American Made
Rochling/Symplastics

BODY COMPONENTS

Delta Waseca
Dorsey
Fruehauf
Great Dane
Grumman
Hackney
Hyundai
Manac
Marion Body
Monon
Morgan
Pines
Ravens
Strick
Stoughton
Supreme Body
Trailmobile
Utility
Wabash

BRAKE VALVES

Haldex
Bendix
Meritor/Wabco
Precision Rebuilders
Tramec
Williams
Sealco
Velvac
Tectran

BRAKE CHAMBERS

Bendix/Di Pro
Haldex
MGM
Pro Line/Ranger
TSE Omnibrake

BRAKE DRUMS

ArvinMeritor
Dayton
Dexter
Great Dane
Gunita
Hayes/Motorwheel
Kic/Reyco
Webb

BRAKE HARDWARE

ArvinMeritor
Bendix
BWP
Dayton
Dexter
Express Brake Int.
Haldex
Leland
Neo Brake
Sirco

BRAKE SHOES

Abex
ArvinMeritor
Dayton
Dexter
Express Brake Int.
HDA
Haldex
Neo Brake
Raybestos

CARGO CONTROL

ACCO/Peerless Chain
Ancra
Columbus Mckinon
Kinedyne
Merritt
Pro-Tec Products
Save-A-Load
S-Line
Sturdy Lite

DOORS & PARTS

Buffers
Bloxwich
Diamond Door
Eberhard
Fleet Engineers
Newcourt
Penz
Power Brace
RoaDor
Todco
Whiting

ELECTRICAL

Cole Hersee
Del City
Grote
Haldex
Keene
M & E Components
Philatron
Phillips
Tramec
Tectran
Trucklite
Velvac

FIFTH WHEEL & PARTS

Fontaine
Holland
Jost
Simplex

FLOORING

Aluminum
Apitong
Hallco Walking Floors
Hardwood Laminated Oak
Keith Walking Floors
Key Polymer Floor Restore

**Green Bay**

2049 Creamery Road
De Pere, WI 54115
P: 800.242.2891
F: 920.336.9188

Milwaukee

2435 W. Southbranch Blvd
Oak Creek, WI 53154
P: 800.242.5244
F: 414.761.6265

Minneapolis

9600 71st Street NE
Albertville, MN 55301
P: 888.399.3845
F: 763.497.7086

Grand Rapids

6634 Center Industrial Dr.
Jenison, MI 49428
P: 888.878.2546
F: 616.534.7736

HEAVY DUTY PARTS LINE CARD**HUB ODOMETER**

Stemco
Veeder Root

LANDING GEAR

Austin
Binkley
Bulldog
Butler
Dayton
Great Dane
Holland
Jost
Kysor Westran
On Lift/Patriot Lift
Power Gear

LIFT GATES & PARTS

Anthony
Holland
Interlift
Leyman
Maxon
National Lift Gate Parts
Theiman
Waltco

LIGHTS

A.L. Lightech
American Superlite
Betts
Double JJ Ent.
Federal Signal
Grand General
Grote
Hella
Optronics
Peterson Manufacturing
Road Master
Signal Stat
Trucklite
Trux
United Pacific
Wagner

MUD FLAPS

Betts
Buyers
Globetech
Great Dane
Koneta
Minimizer
Rochling / Symplastics

PINTLE HOOKS

Buyers Products
Holland
Premier
Wallace Forge

REEFER ACCESSORIES

Applichem / Epoca
Elston Proheat
F & G Products
Fuel Tanks
ITW
Randall Mfg.
Technology Fleet Products

SAFETY COMPLIANCE

JJ Keller
Kidde
LabelMaster
Safe Truck

SCUFFLINERS

Aluminum
Bulitex
Eco-Tech
Galvanized
Kemlite
Laminated Oak
Plastic
Polyethylene
Punctureguard

SHOCK ABSORBERS

Gabriel
Hendrickson
Meritor
Monroe
Neway

STORAGE / BATTERY BOXES

Aero Industries
Merritt / Bower
Minimizer
Pro-Tech
RC Industries
Sturdy Lite
TL Woods

SLACK ADJUSTERS

ArvinMeritor
BWP
Dayton
Gunitex
Haldex
Leland
Sirco
Stemco/Crewson Brunner

SPRINGS

Auto Car
Binkley
BlueBird
Dana
Dana Spicer
Dayton
Ford/Sterling
Freightliner
Fruehauf
Hendrickson
Holland/Neway
Hutch
Kenworth
Mack
Navistar
Page
Peterbilt
Reyco
Ridewell
Trailmobile
Triangle
Volvo
Watson & Chalin
Western Star



Green Bay

2049 Creamery Road
De Pere, WI 54115
P: 800.242.2891
F: 920.336.9188

Milwaukee

2435 W. Southbranch Blvd
Oak Creek, WI 53154
P: 800.242.5244
F: 414.761.6265

Minneapolis

9600 71st Street NE
Albertville, MN 55301
P: 888.399.3845
F: 763.497.7086

Grand Rapids

6634 Center Industrial Dr.
Jenison, MI 49428
P: 888.878.2546
F: 616.534.7736

HEAVY DUTY PARTS LINE CARD



SUSPENSION PARTS

Auto Car
Binkley
BlueBird
Chalmer
Dana
Dana Spicer
Dayton
Firestone
Ford / Sterling
Freightliner
Fruehauf
Goodyear
Granning
Great Dane
Hendrickson
Holland/Neway
Hutch
Hyster
Kenworth
Mack
ArvinMeritor
Navistar
Page
Peterbilt
Reyco
Ridewell
Silent Drive
Trailmobile
Tuthill
Volvo
Watson & Chalin
Western Star

SUSPENSIONS – LIFTABLE

Hendrickson
Link
Neway
Ridewell
Silent Drive
Watson & Chalin

TARPING SYSTEMS

Aero
Chameleon Tarp
Donovan
Pull Tarp
Roll-Rite
Roll Tite
Shurco

TANKS (air, fuel, hydraulic)

Alt Custom Tanks
Buyers Product
Hoosier Tanks

TIRE CHAINS

Acco/Peerless Chain
Laclede
Lagrand
Security Chain

TIRE PRESSURE SYSTEMS

Airgo
Cat's Eye
Crossfire
Dual Dynamics
Hendrickson
Meritor
T-Rac Trans Technologies

TRAILER FAIRINGS

Airtabs
Freightwing
Greenwing
Laydon Composites
Smart Truck
Transtex Composites
Windyne

WALK RAMPS

Magline
Melcher
R.O.M. Corp
Todco

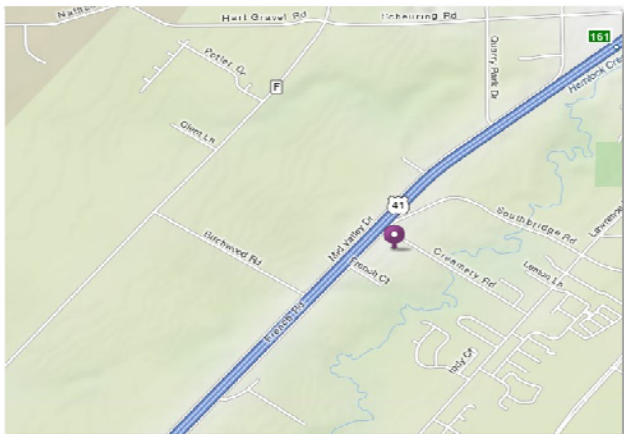
WHEELS

Accuride
Alcoa
Forgitron
Hayes Lemmerz

WHEEL SEALS

ArvinMeritor
Boss
Chicago Rawhide/SKF
National /Federal Mogul
Stemco
Tri-Seal

Green Bay

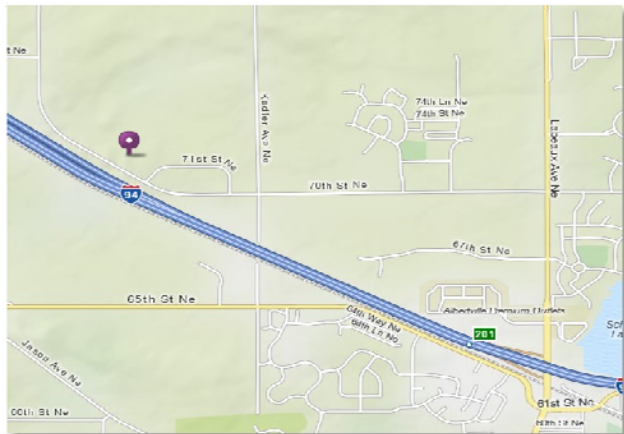


Directions:

FROM THE SOUTH Exit US 41 on County S (Freedom Exit #157). Take East Frontage Road North 2.5 Miles to facility. Branch is 6 Miles south of Green Bay.

FROM THE NORTH Exit 161 Scheuring Rd., head east thru the 2nd set of stoplights to American Blvd. Turn right going south thru the industrial park until you see Southbridge. Take a right going west to the 1st 4 way stop. Continue thru the intersection following Southbridge and look for the Great Dane sign on your left.

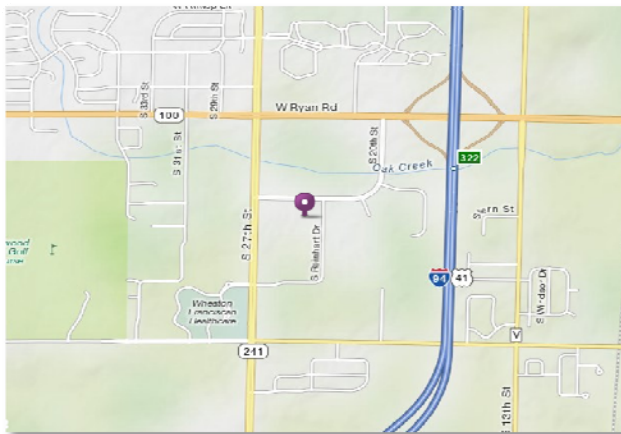
Minneapolis



Directions:

From Westbound I-94 – Exit #202, Go Left through Albertville, Turn Right on Hwy 19, then Left on 70th Street NE to facility.
From Eastbound I-94 – Exit #201, Turn Left on Hwy 19, then Left on 70th Street NE to facility.

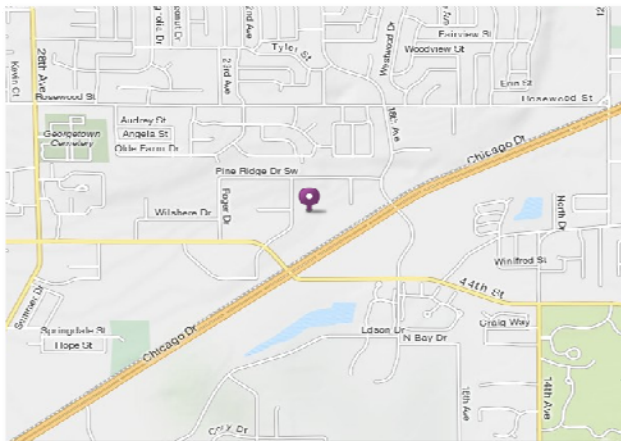
Milwaukee



Directions:

Exit I-94 at Ryan Road (Oak Creek). Go West One Block and Turn Left (South) between Pilot & Loves Travel Centers on South 20th Street into Southbranch Industrial Park. Continue 3 Blocks to facility on the left.

Grand Rapids



Directions:

From US 131 – Exit #79 (44th St.), West over I-196 crossing over Chicago Drive, Turn right on Center Industrial Drive, we are on the right.

From I-196 Southbound – Exit #69B Chicago Drive and Head West. Turn right on Port Sheldon Street. Turn right on Center Industrial Drive, we are on the right.

From I-196 Northbound – Exit 67, Go West cross over Chicago Drive, Turn right on Center Industrial Drive, we are on the right.